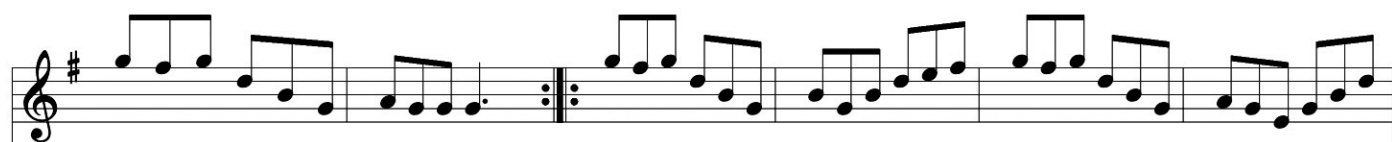


ss walsh's Fancy ( double jig )



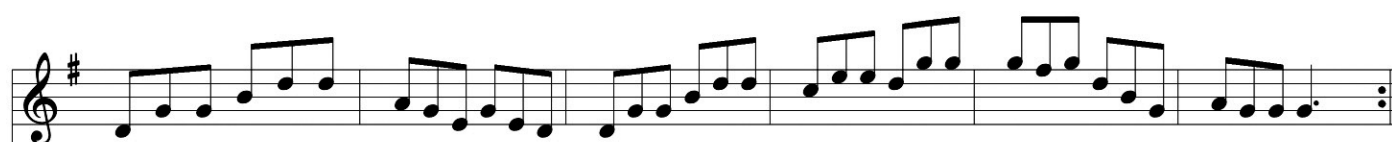
P	5 6 6 7 6 6	8 6 6 7 6 6	6 6 7 6 6	6 5	5 6 6 7 6 6	8 6 6 7 6 6
T	.		3'	6 7 7 6		
	G g G g	G g G g	D g G g	D d D g	G g G g	G g G g



P	9 9 8 7 6	6 6 6—	9 9 8 7 6	7 6 7	9 9 8 7 6	6 6 7 8
T	10	7 .	10	7'910	10	7 5
	G g G g	D g G g	G g G g	G g D d	G g G g	A a G g



P	9 9 8 7 6	7 6 7	9 9 8 7 6	6 6 6—	5 6 6 7 8 8	7 8 8
T	10	7'910	10	7 .		8 9 9
	G g G g	G g D d	G g G g	D g G g	G g G g	A a G g



P	5 6 6 7 8 8	6 6 5	5 6 6 7 8 8	8 9 9	9 9 8 7 6	6 6 6—
T		7 5 5		8 9 9	10	7 .
	G g G g	A a G g	G g G g	A a G g	G g G g	D g G g